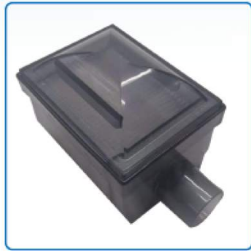




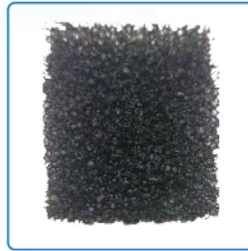
- 1** Compact, portable easy for carrying.
- 2** Timer function
- 3** 24hours/7 days working
- 4** USA imported molecular sieve



Filter 1pc



Nasal Cannula 1pc



dust filter 1pc



Humidifier bottle 1pc

Product Model	YS-300Y
Oxygen concentration	0.5-3L@90%+ -3%
Oxygen flow rate	0.5~3L/min
Rated power	210W
Rated voltage	AC 220V,50Hz/ 110V,60Hz
Output pressure	≥58.6+ -6Kpa
Noise	≤45dB
Net weight	8kg
Packing size	407(L)*239(W)*348(H)cm
Basic function	Oxygen production, Atomization, Timing